

SGCO

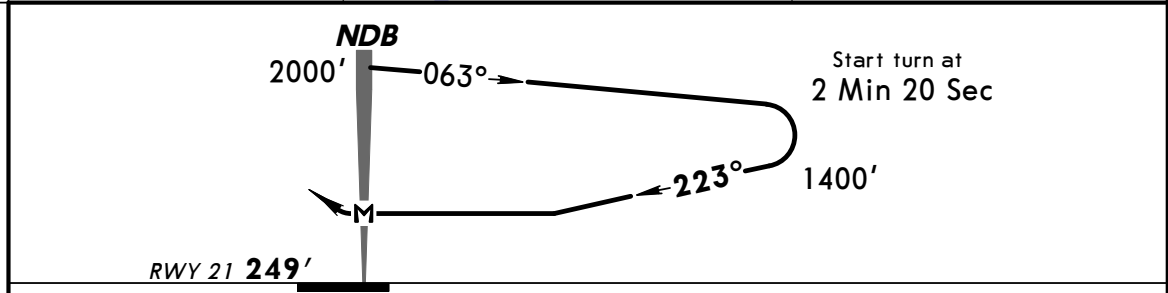
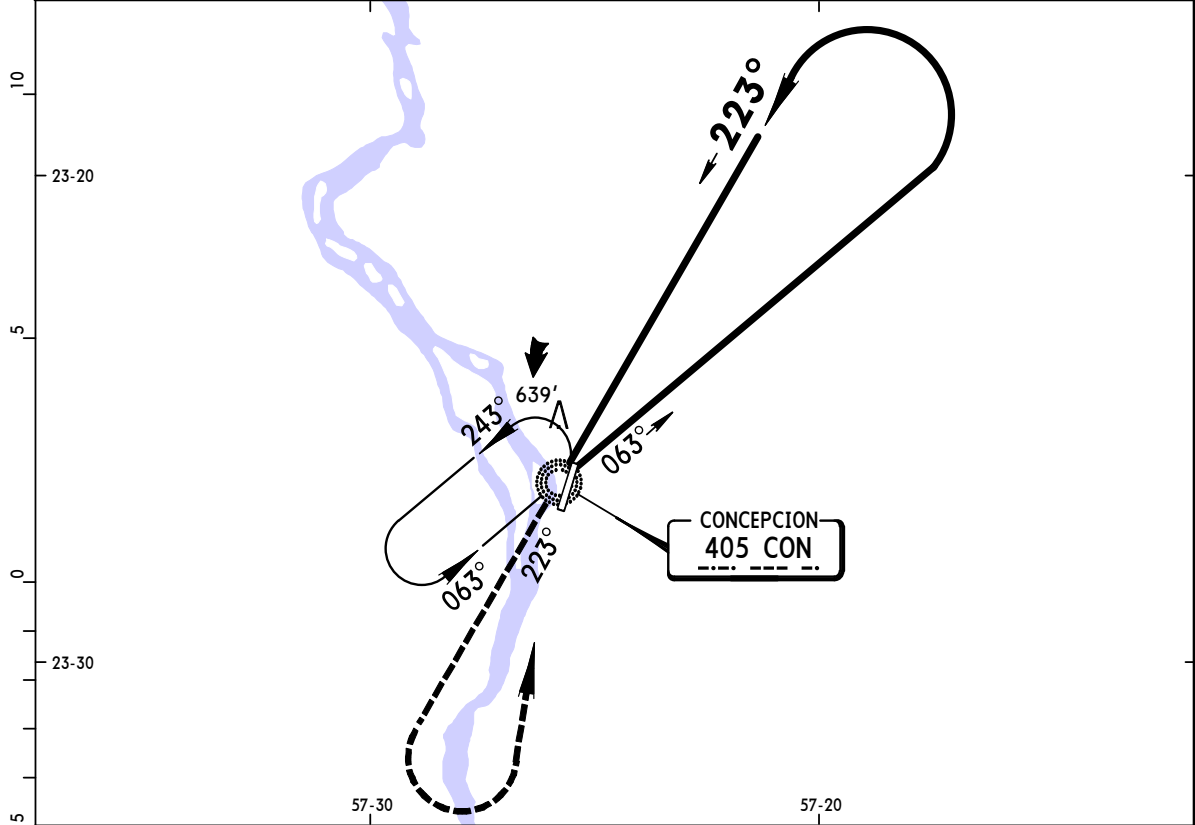
**JEPPESEN** CONCEPCION, PARAGUAY  
 PROCEDURE ALFA

23 APR 04 (16-1)

TEN. CRL. CARMELO PERALTA

CAT A, B & C NDB Rwy 21

*CONCEPCION Tower			*CONCEPCION Radio		
118.4			120.5		
NDB CON <b>405</b>	Final Apch Crs <b>223°</b>	No FAF	MDA(H) <b>700' (451')</b>	Apt Elev <b>253'</b> RWY 21 <b>249'</b>	1600'
MISSED APCH: Climb on 223° bearing from CON NDB to 3000' then turn LEFT to CON NDB and hold.					
Alt Set: hPa (IN on req)		Rwy Elev: 9 hPa	Trans level: By ATC		Trans alt: 3000'
					MSA CON NDB



Rate of descent on final (feet/min)	500	3000'	CON
MAP at NDB		↑ on	<b>405</b>
			<b>223°</b>

STRAIGHT-IN LANDING RWY 21		CEILING REQUIRED	CIRCLE-TO-LAND	
MDA(H) <b>700' (451')</b>		Max Kts	MDA(H)	CEIL-VIS
A	CEILING-VISIBILITY	100	<b>700' (451')</b>	500' - 1600m
B	500' - 1600m	135	<b>850' (601')</b>	600' - 1600m
C	500' - 2000m	180	<b>1030' (781')</b>	800' - 3600m
D	NA	D	NA	NA

PANS OPS

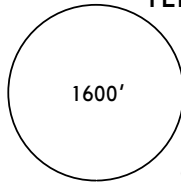
**JEPPESEN**

9 JUL 99 (16-2)

**CONCEPCION, PARAGUAY**  
 TEN. CRL. CARMELO PERALTA  
**PROCEDURE BRAVO**  
 CAT A,B & C NDB Rwy 03

\*CONCEPCION Tower **118.4**

\*CONCEPCION Radio **120.5**

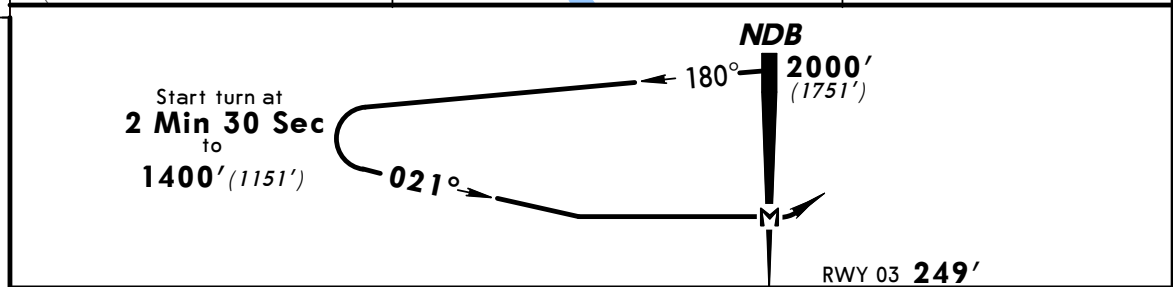
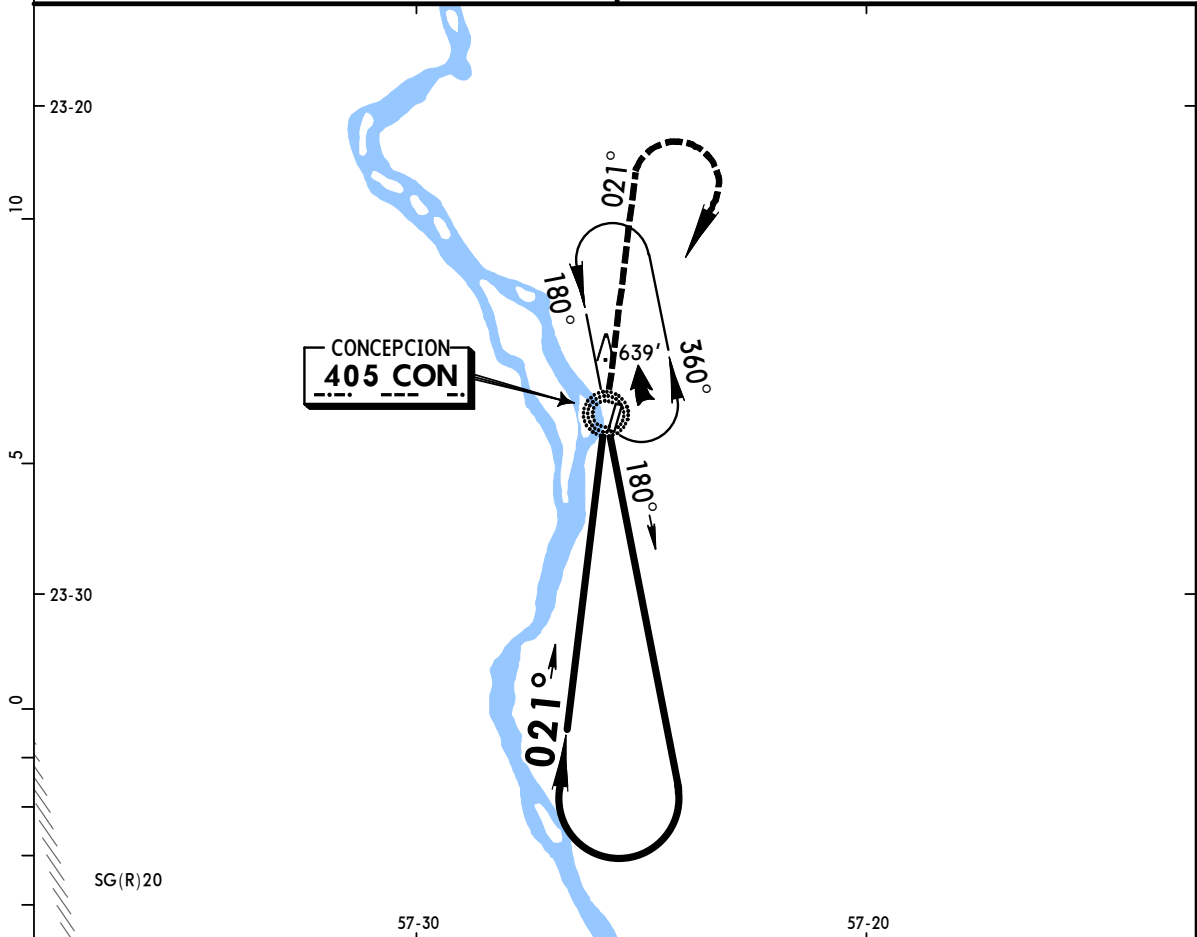


Alt Set: hPa (IN on req)  
 Rwy Elev: 9 hPa

Trans level: By ATC  
 Trans alt: 3000' (2751')

MSA  
 CON NDB

NDB **405 CON**  
 Apt. Elev **253'**



**MISSED APPROACH:** Climb on **021°** bearing from **CON NDB** to **3000'** then turn **RIGHT** to **CON NDB** and hold.

STRAIGHT-IN LANDING RWY 03		CEILING REQUIRED	CIRCLE-TO-LAND	
MDA(H) <b>660' (411')</b>				
	CEILING-VISIBILITY	Max Kts	MDA(H)	CEIL-VIS
A	500' - 1600m	100	<b>700' (451')</b>	500' - 1600m
B	500' - 2000m	135	<b>850' (601')</b>	600' - 1600m
C	500' - 2000m	180	<b>1030' (781')</b>	800' - 3600m
D	NA	D	NA	NA

PANS OPS

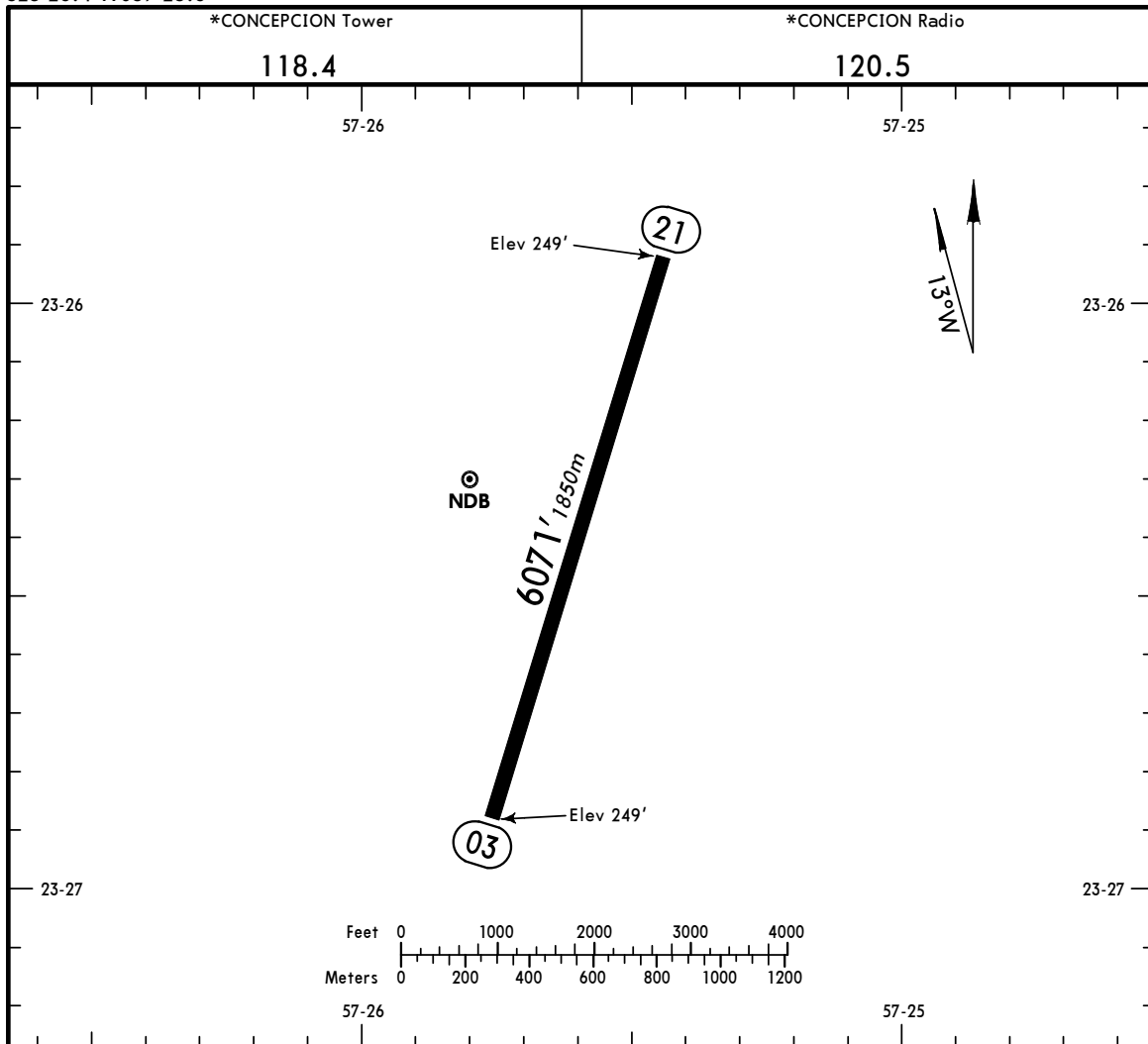
Rate of descent on final (feet/min)	500
MAP at NDB	

CHANGES: Airport name.

© JEPPESEN SANDERSON, INC., 1997, 1999. ALL RIGHTS RESERVED.

**SGCO**  
 Apt Elev **253'**  
 S23 26.4 W057 25.6

**JEPPESEN CONCEPCION, PARAGUAY**  
 23 APR 04 **(16-1)**  
 TEN. CRL. CARMELO PERALTA



**ADDITIONAL RUNWAY INFORMATION**

RWY	USABLE LENGTHS	WIDTH
03 21 RL		148' 45m

**TAKE-OFF**

All Rwys

A  
B  
C  
D

Available Landing Minimums