

**JEPPESEN**

1 MAY 98 (13-1)

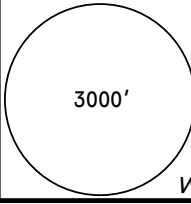
**ENCARNACION, PARAGUAY**

QUITERIA

CAT A & B **PROCEDURE ALFA**

**VOR/VOR DME Rwy 05**

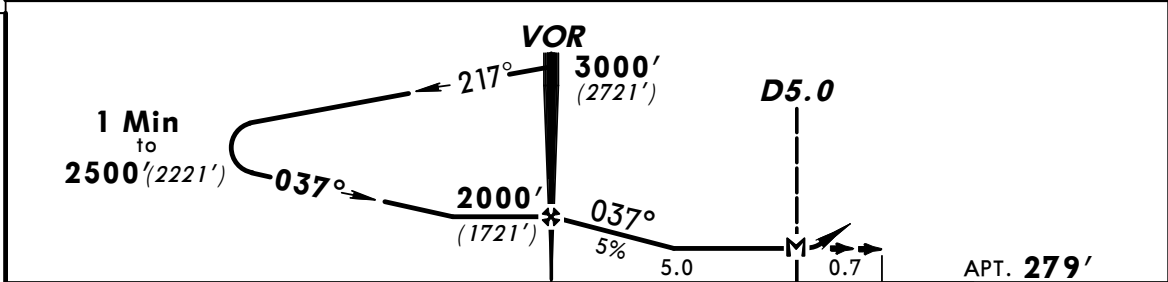
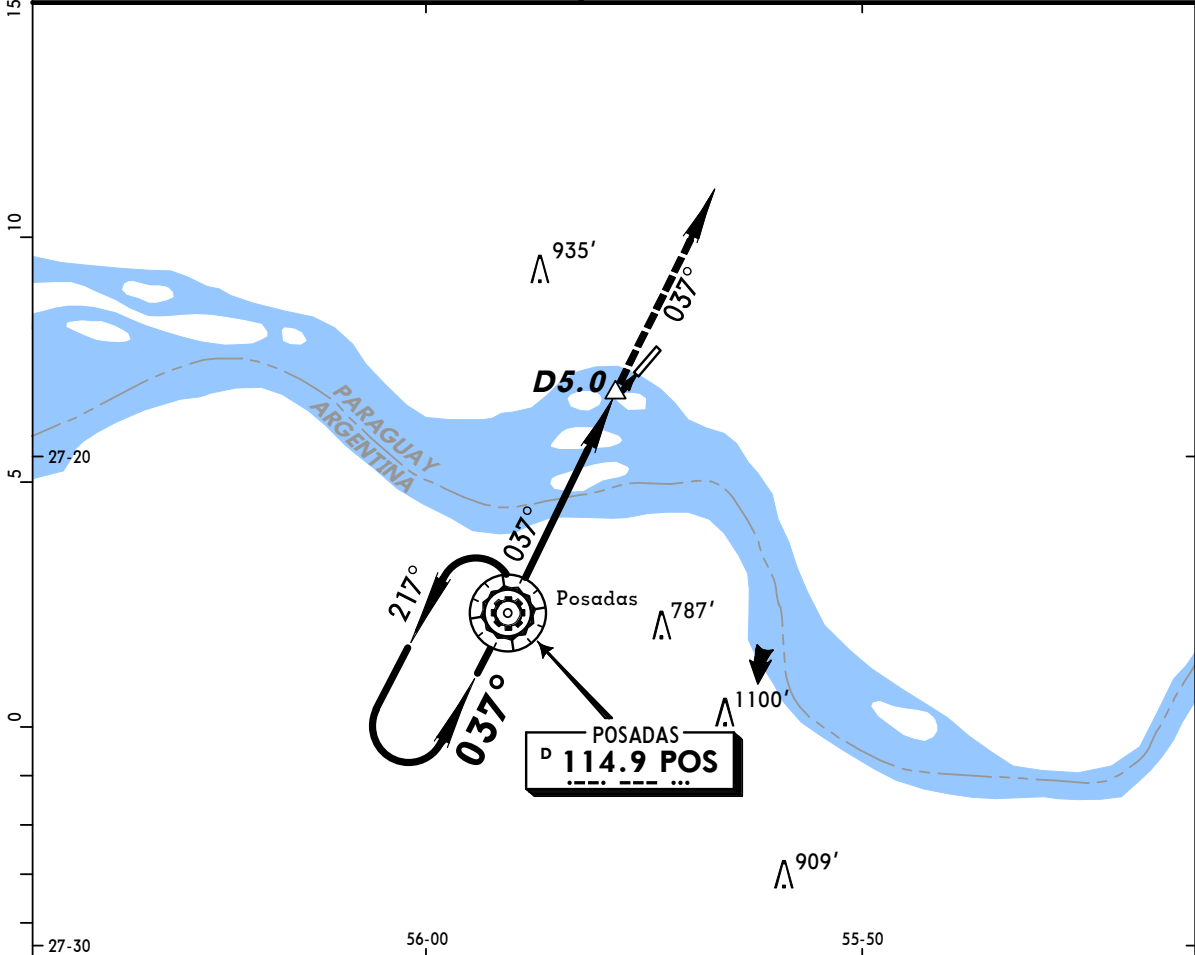
\*POSADAS Approach **120.1**



MSA  
POS VOR  
Within 15 NM

VOR **114.9 POS**  
Apt. Elev **279'**

Alt Set: hPa (IN on req) Trans level: By ATC  
Apt Elev: 10 hPa Trans alt: 3000' (2721')



**MISSED APPROACH:** Climb outbound on POS VOR R-037 to 3000' within D15.0 POS VOR and follow instructions from CONTROL.

STRAIGHT-IN LANDING RWY05		CEILING REQUIRED		CIRCLE-TO-LAND	
MDA(H) <b>920' (641')</b>				DAY	NIGHT
DAY		NIGHT		Max Kts	
A	CEILING-VISIBILITY			100	MDA(H) <b>920' (641')</b> CEIL-VIS <b>700'-2000m</b>
B	700' - 1600m			135	
C	NA	NA		C	NA
D	NA	NA		D	

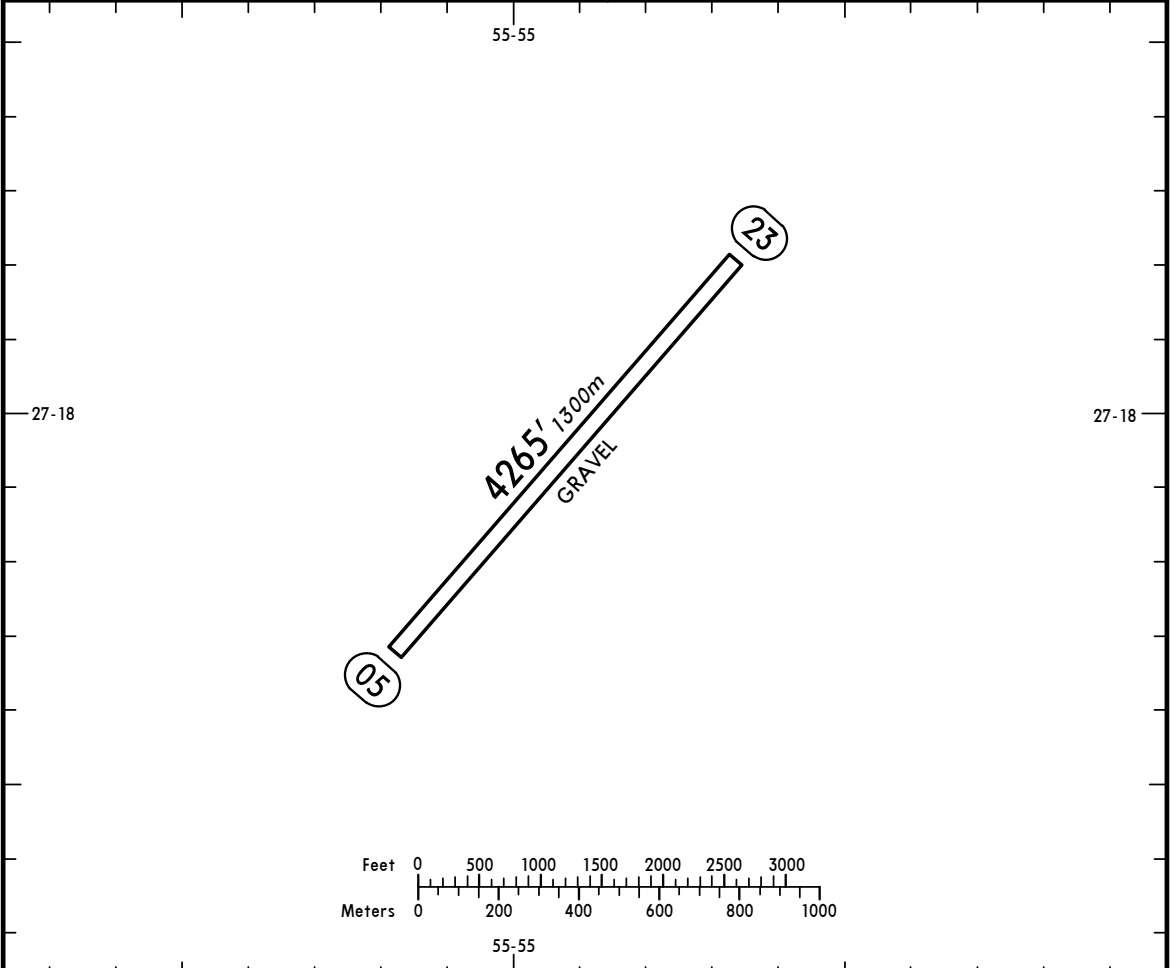
PANS OPS

Gnd speed-Kts	80	100	120
Rate of descent on final (feet/min)	400	500	600
MAP at D5.0 or VOR to MAP	5.0	3:45	3:00

CHANGES: Posadas VOR ident.

**ENCARNACION, PARAGUAY SGEN** (13-1) 1 MAY 98 **JEPPESEN**

**QUITERIA**  
 S27 18.0 W055 55.0 039.2°/5.9 From POS 114.9  
 Elev **279'** Var 10°W



ADDITIONAL RUNWAY INFORMATION					
RWY		USABLE LENGTHS		TAKE-OFF	WIDTH
		LANDING BEYOND Threshold	Glide Slope		
05	23				131' 40m

TAKE-OFF	
<b>All Rwys</b>	
A	Available Landing Minimums
B	
C	
D	