

SID

JEPPESEN 27 NOV 98

10-3

CIUDAD DEL ESTE, PARAGUAY

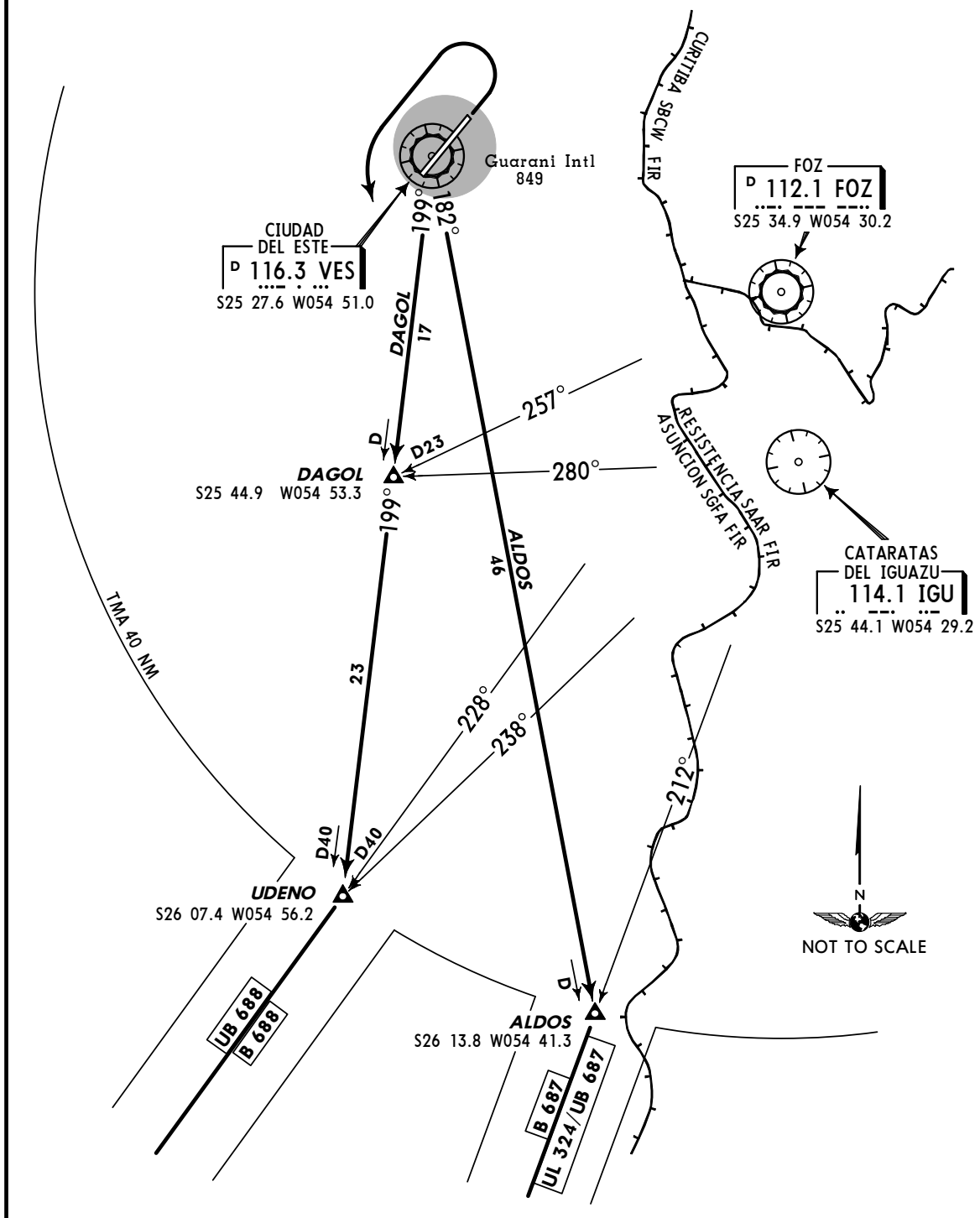
GUARANI INTL

TRANS LEVEL: BY ATC
TRANS ALT: 3000'

ALDOS, DAGOL DEPARTURE

TAKE-OFF

Rwy 05 or 23: As soon as possible, LEFT turn to intercept VES R-199° or VES R-182°, then climb to 2000' or continue according to ATC clearance, then heading to Dagol Int. or Aldos Int.



SID

JEPPESEN

27 NOV 98

10-3A

CIUDAD DEL ESTE, PARAGUAY

GUARANI INTL

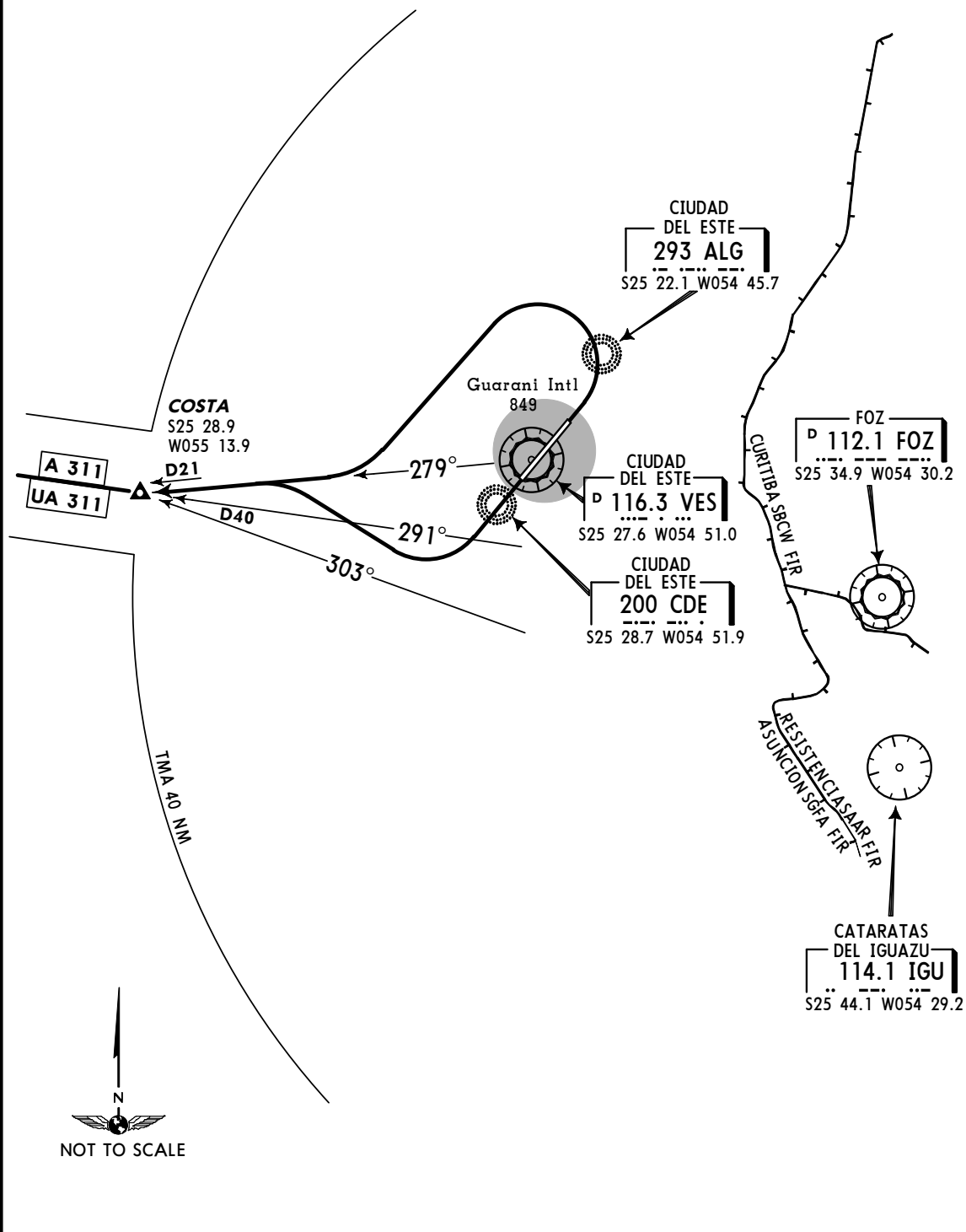
TRANS LEVEL: BY ATC
TRANS ALT: 3000'

COSTA DEPARTURE

TAKE-OFF

Rwy 05: As soon as possible, LEFT turn to intercept VES R-279° then climb to 2000' or continue according to ATC clearance, then to Costa Int.

Rwy 23: As soon as possible, RIGHT turn to intercept VES R-279° then climb to 2000' or continue according to ATC clearance, then to Costa Int.



SID

JEPPESEN 27 NOV 98

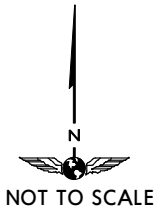
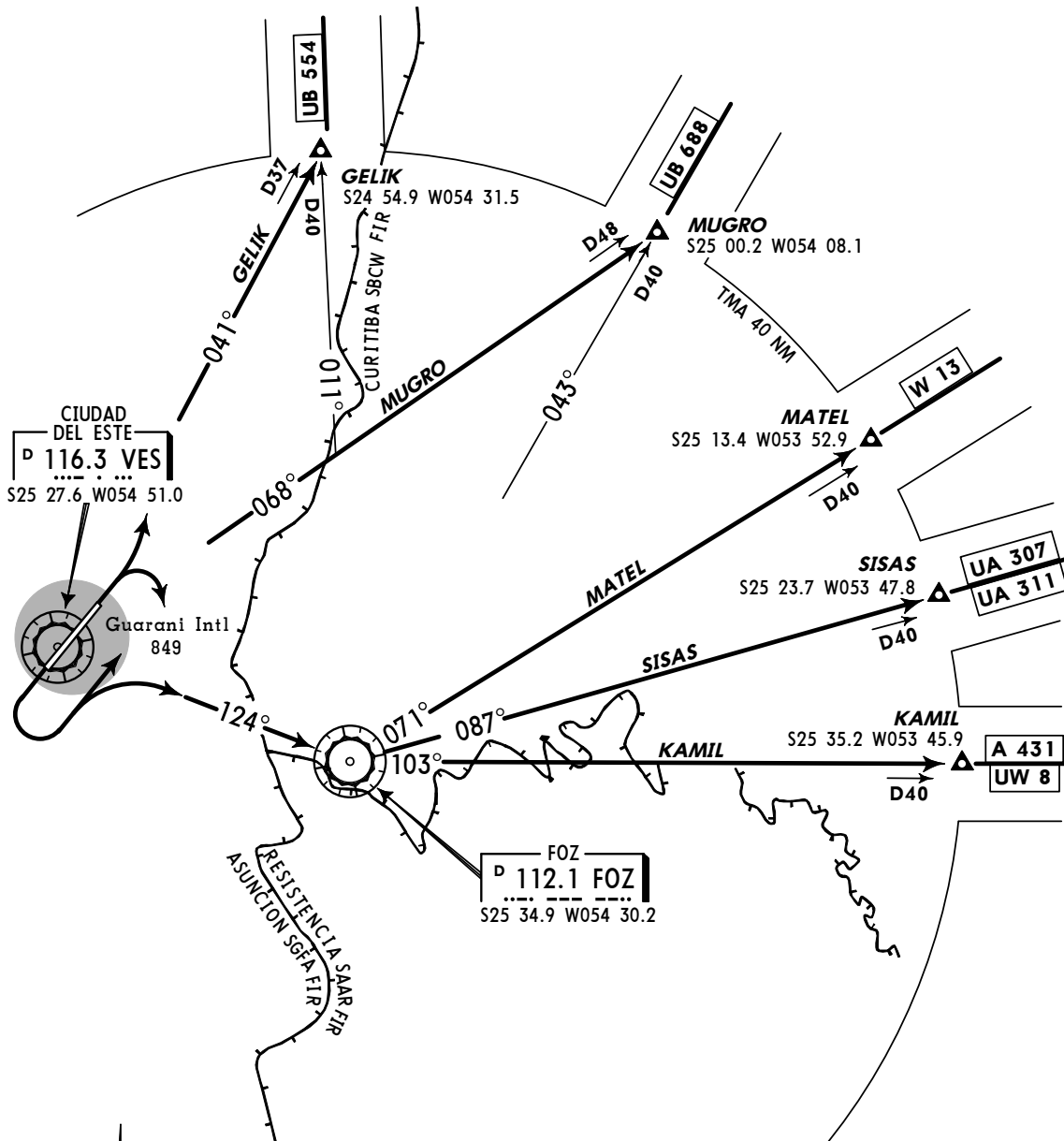
10-3B

CIUDAD DEL ESTE, PARAGUAY GUARANI INTL

TRANS LEVEL: BY ATC
TRANS ALT: 3000'

GELIK, KAMIL, MATEL, MUGRO, SISAS DEPARTURE (MUST BE COORDINATED WITH FOZ APPROACH)

Direct distance from Guarani Intl to:
FOZ VOR **20 NM**



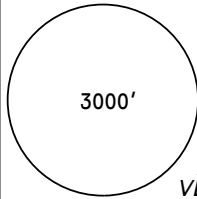
JEPPESEN

30 MAR 01 (13-1)

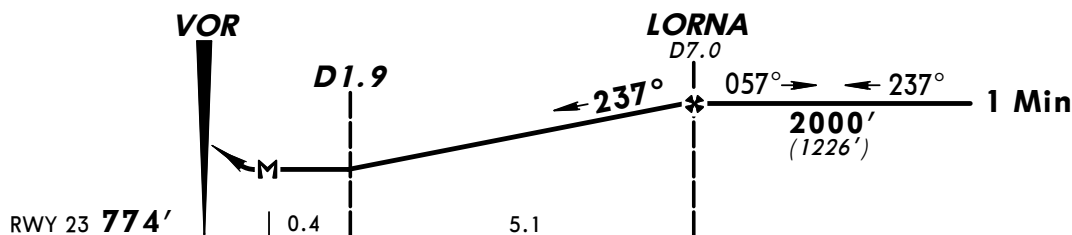
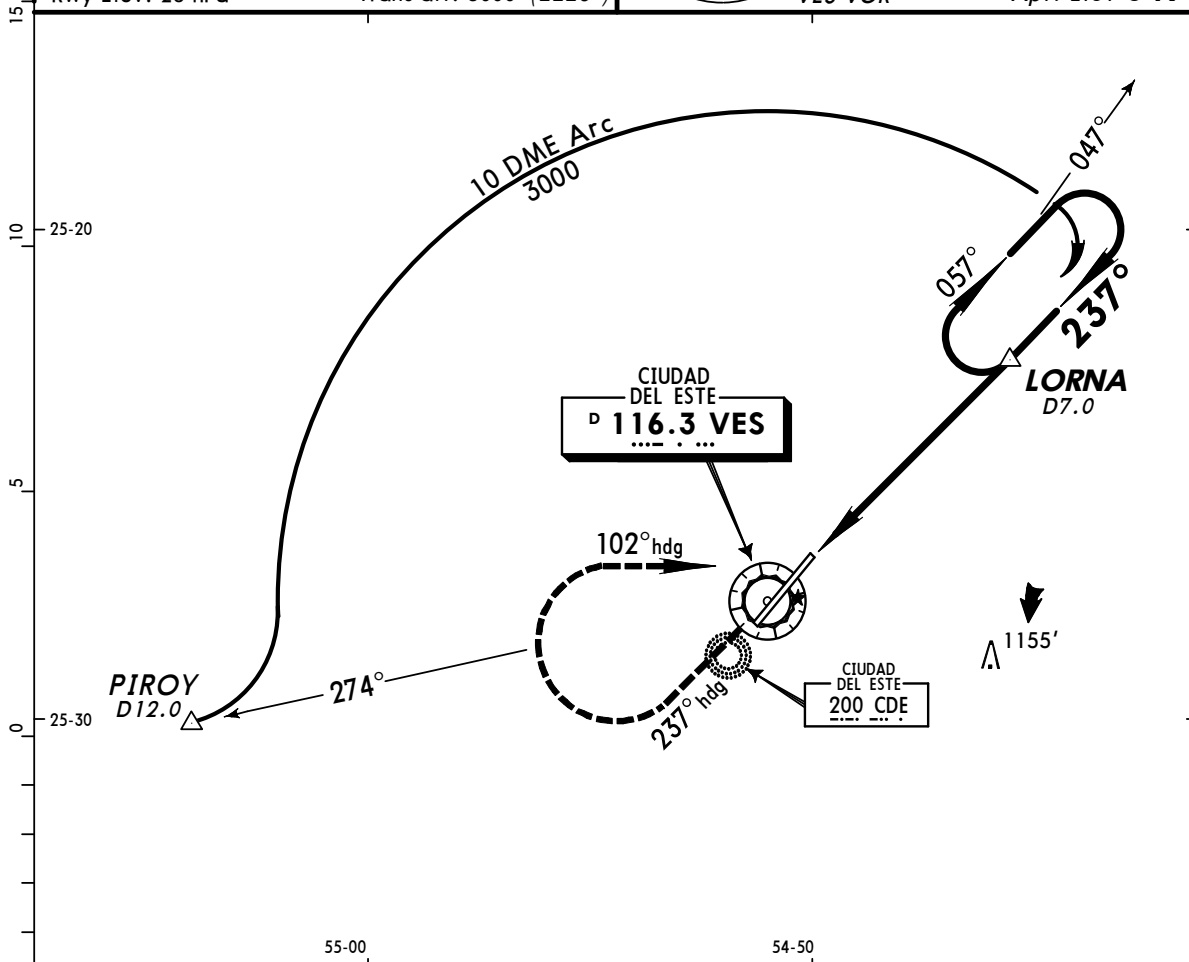
CIUDAD DEL ESTE, PARAGUAY

**GUARANI INTL
 PROCEDURE BRAVO
 VOR DME Rwy 23**

GUARANI Approach **119.3 120.6**
 GUARANI Tower **118.1**
 Ground **121.7**
 Alt Set: hPa (IN on req) Trans level: By ATC
 Rwy Elev: 28 hPa Trans alt: 3000' (2226')



VOR **116.3 VES**
 Apt. Elev **849'**



MISSED APPROACH: Climb on heading **237°** to **3000'** then turn **RIGHT** to a **102°** heading to intercept **VES VOR R-057** to **LORNA INT** and hold.

STRAIGHT-IN LANDING RWY 23 **CEILING REQUIRED** CIRCLE-TO-LAND

MDA(H) **1250' (476')**

	CEILING-VISIBILITY		Max Kts	MDA(H)		CEIL-VIS	
	ALS out						
A			100	1370' (521')		600' - 1600m	
B	500' - 1600m		135				
C	500' - 2000m		180	1550' (701')		700' - 3200m	
D	500' - 2800m		205	1550' (701')		700' - 3600m	

PANS OPS

Gnd speed-Kts	90	110	130	150	170	190
Rate of descent on final (feet/min)	330	400	495	600	680	760
LORNA to MAP	5:5	3:33	2:54	2:27	2:08	1:41

CHANGES: PIROY formation radial.

© JEPPESEN SANDERSON, INC., 1996, 2001. ALL RIGHTS RESERVED.

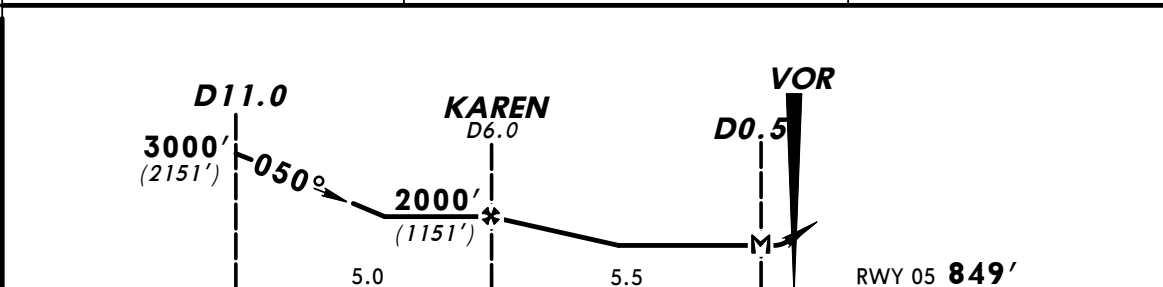
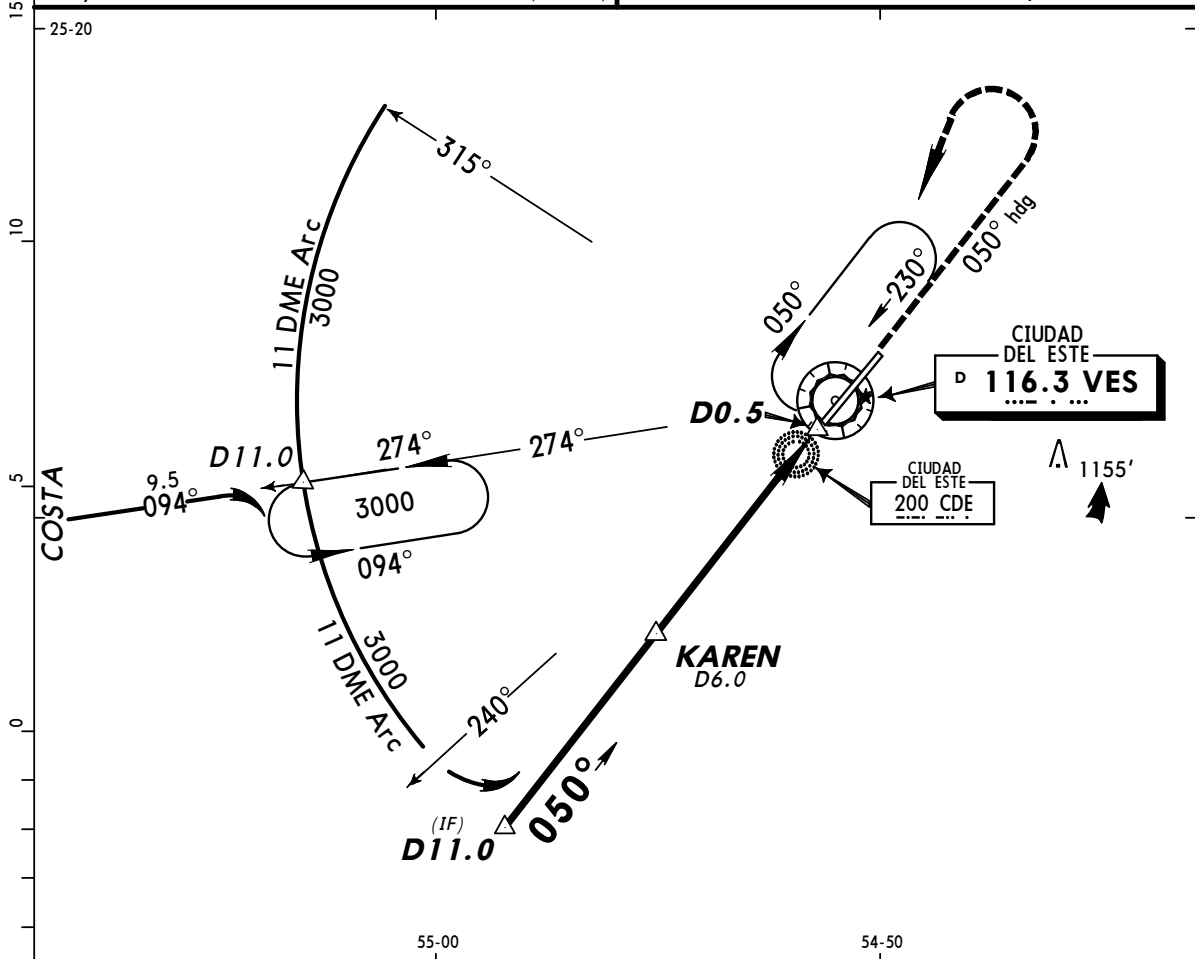
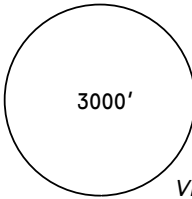
JEPPESEN

30 MAR 01 (13-2)

CIUDAD DEL ESTE, PARAGUAY

**GUARANI INTL
 PROCEDURE ALFA
 VOR DME Rwy 05
 VOR 116.3 VES
 Apt. Elev 849'**

GUARANI Approach **119.3 120.6**
 GUARANI Tower **118.1**
 Ground **121.7**
 Alt Set: hPa (IN on req) Trans level: By ATC
 Rwy Elev: 31 hPa Trans alt: 3000' (2151')



MISSED APPROACH: Climb on heading 050° to 3000' then turn LEFT and return to VES VOR and hold.

STRAIGHT-IN LANDING RWY 05 CEILING REQUIRED		CIRCLE-TO-LAND	
MDA(H) 1290' (441')		Max Kts	MDA(H) CEIL-VIS
A	CEILING-VISIBILITY	100	1370' (521') 600' - 1600m
B	500' - 1600m	135	1550' (701') 700' - 3200m
C	500' - 2000m	180	1550' (701') 700' - 3600m
D	500' - 2400m	205	1550' (701') 700' - 3600m

PANS OPS

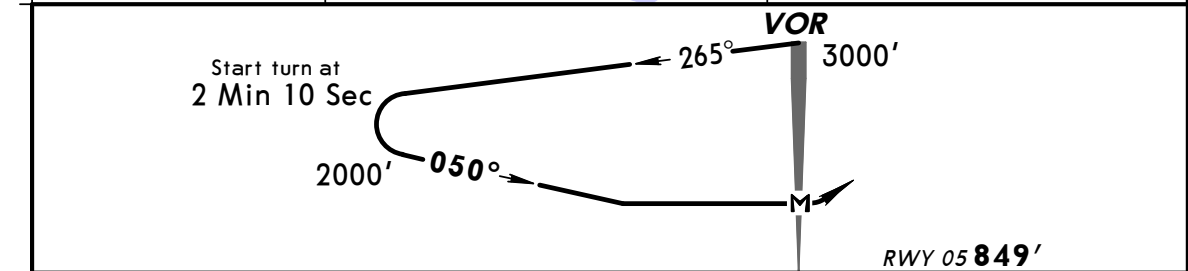
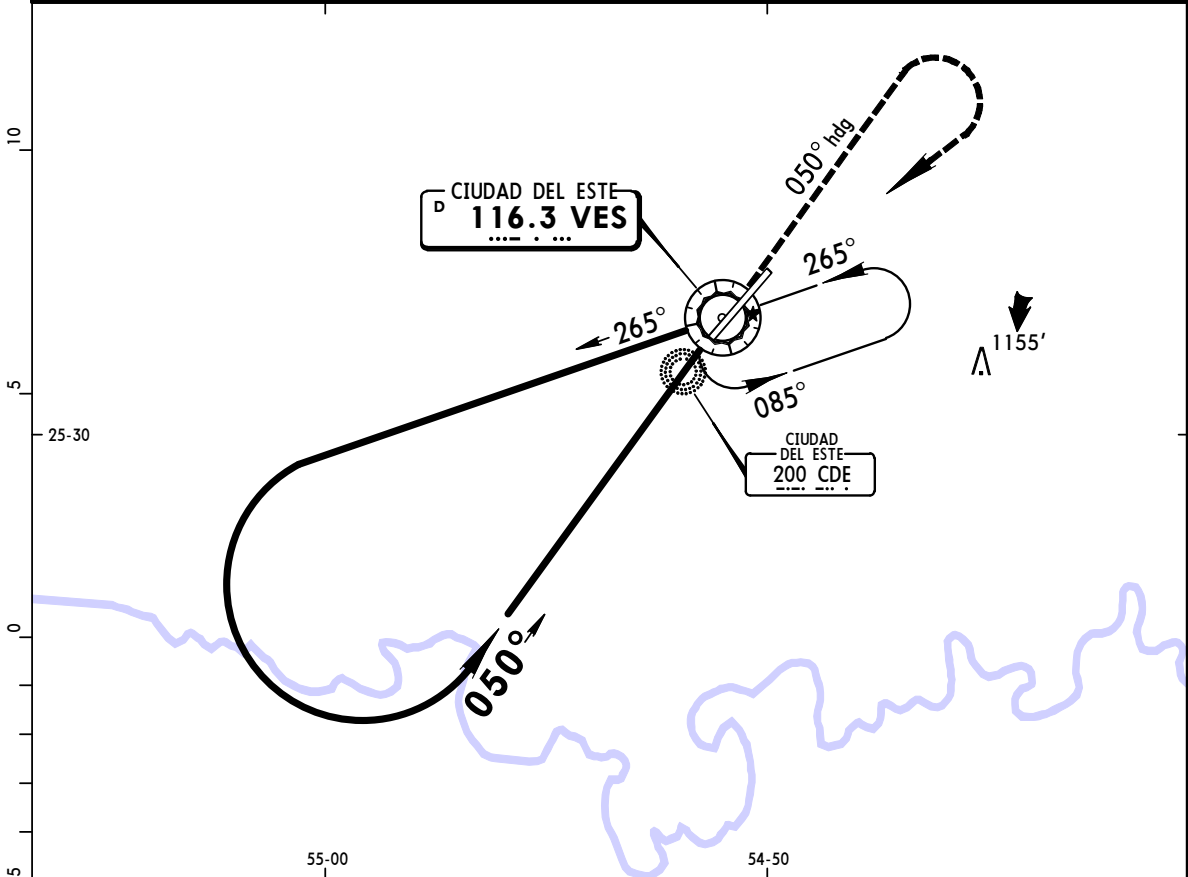
Gnd speed-Kts	90	110	130	150	170	190
Rate of descent on final (feet/min)	355	435	545	655	745	835
KAREN to MAP	5.5	3:40	3:00	2:32	2:12	1:56

SGES
GUARANI INTL

JEPPESEN 5 DEC 03 **(13-3)**

CIUDAD DEL ESTE, PARAGUAY
ECHO VOR Rwy 05

BRIEFING STRIP™	GUARANI Approach		GUARANI Tower		Ground	
	119.3	120.6	118.1		121.7	
	VOR VES 116.3	Final Apch Crs 050°	No FAF	MDA(H) 1290' (441')	Apt Elev 849' RWY 05 849'	3000'
	MISSED APCH: Climb on heading 050° to 3000' then turn RIGHT and return to VES VOR and hold.					
Alt Set: hPa		Rwy Elev: 31 hPa	Trans level: By ATC		Trans alt: 3000'	
					MSA VES VOR	



Gnd speed-Kts	90	110	130	150	170	190	PAPI	3000' on 050° hdg	RT	VES 116.3
Rate of descent on final (feet/min)	550									
MAP at VOR										

STRAIGHT-IN LANDING RWY 05 CEILING REQUIRED CIRCLE-TO-LAND	
MDA(H) 1290' (441')	
	Max Kts.
A	100
B	135
C	180
D	205
CEILING-VISIBILITY	MDA(H) CEIL-VIS
500' - 1600m	1370' (521') 600' - 1600m
500' - 2000m	1550' (701') 700' - 3200m
500' - 2800m	1550' (701') 700' - 3600m

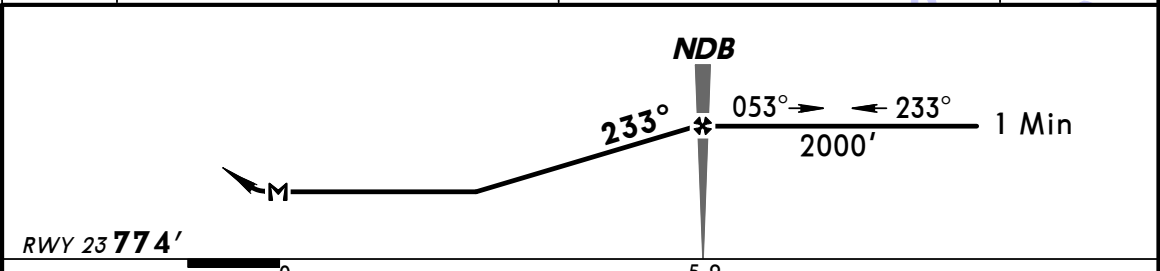
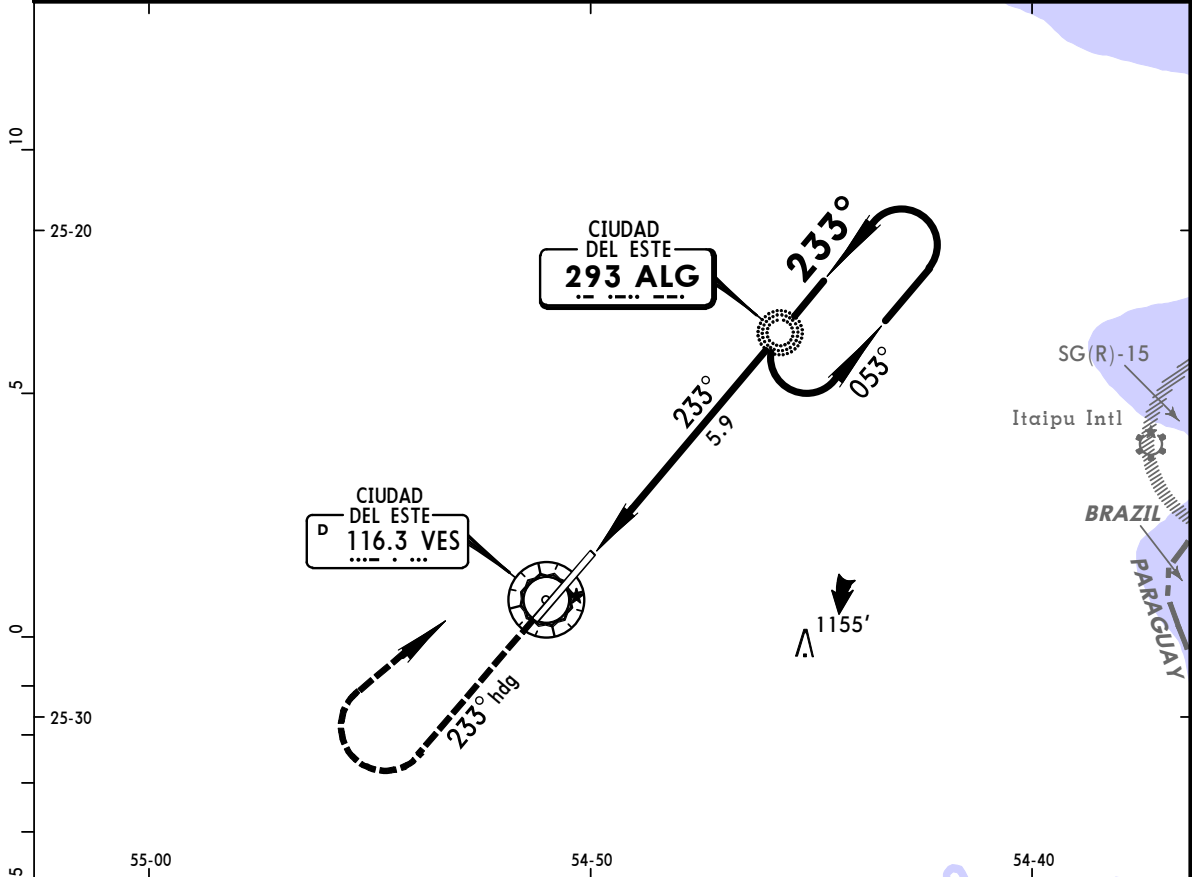
PANS OPS

SGES
GUARANI INTL

JEPPESEN
 5 DEC 03 (16-1)

CIUDAD DEL ESTE, PARAGUAY
DELTA NDB Rwy 23

GUARANI Approach		GUARANI Tower			Ground
119.3	120.6	118.1			121.7
NDB ALG 293	Final Apch Crs 233°	Minimum Alt NDB 2000' (1226')	MDA(H) 1270' (496')	Apt Elev 849'	3000'
RWY 23 774'					
MISSED APCH: Climb on heading 233° to 3000' then turn RIGHT to ALG NDB and hold.					
Alt Set: hPa	Rwy Elev: 28 hPa	Trans level: By ATC	Trans alt: 3000'	MSA VES VOR	



Gnd speed-Kts	90	110	130	150	170	190	PAPI	3000'	233°	ALG
Rate of descent on final (feet/min)	350	450	500	650	750	800	ALS	↑	hdg	RT
NDB to MAP	5.9	3:56	3:14	2:43	2:21	2:04	1:51			293

STRAIGHT-IN LANDING RWY 23		CEILING REQUIRED	CIRCLE-TO-LAND	
MDA(H) 1270' (496')		Max Kts	MDA(H)	CEIL-VIS
ALS out		100	1370' (521')	600' - 1600m
A	500' - 1600m	135	1550' (701')	700' - 3200m
B	500' - 2000m	180	1550' (701')	700' - 3600m
C	500' - 2800m	205		
D				

PANS OPS

JEPPESEN

12 JAN 96 (16-2)

CIUDAD DEL ESTE, PARAGUAY

GUARANI INTL

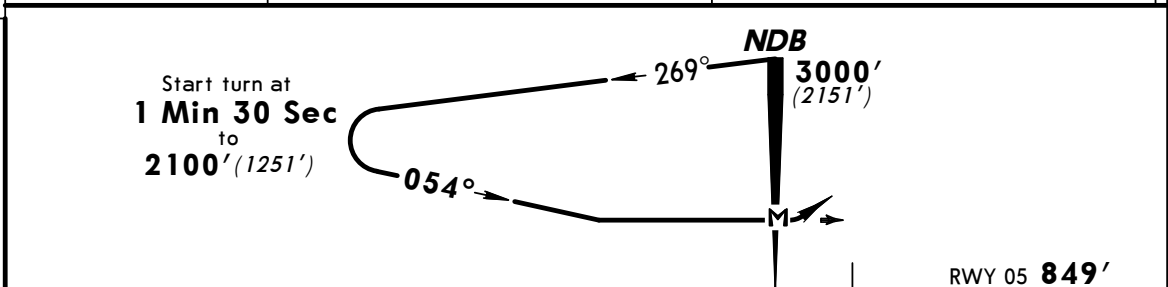
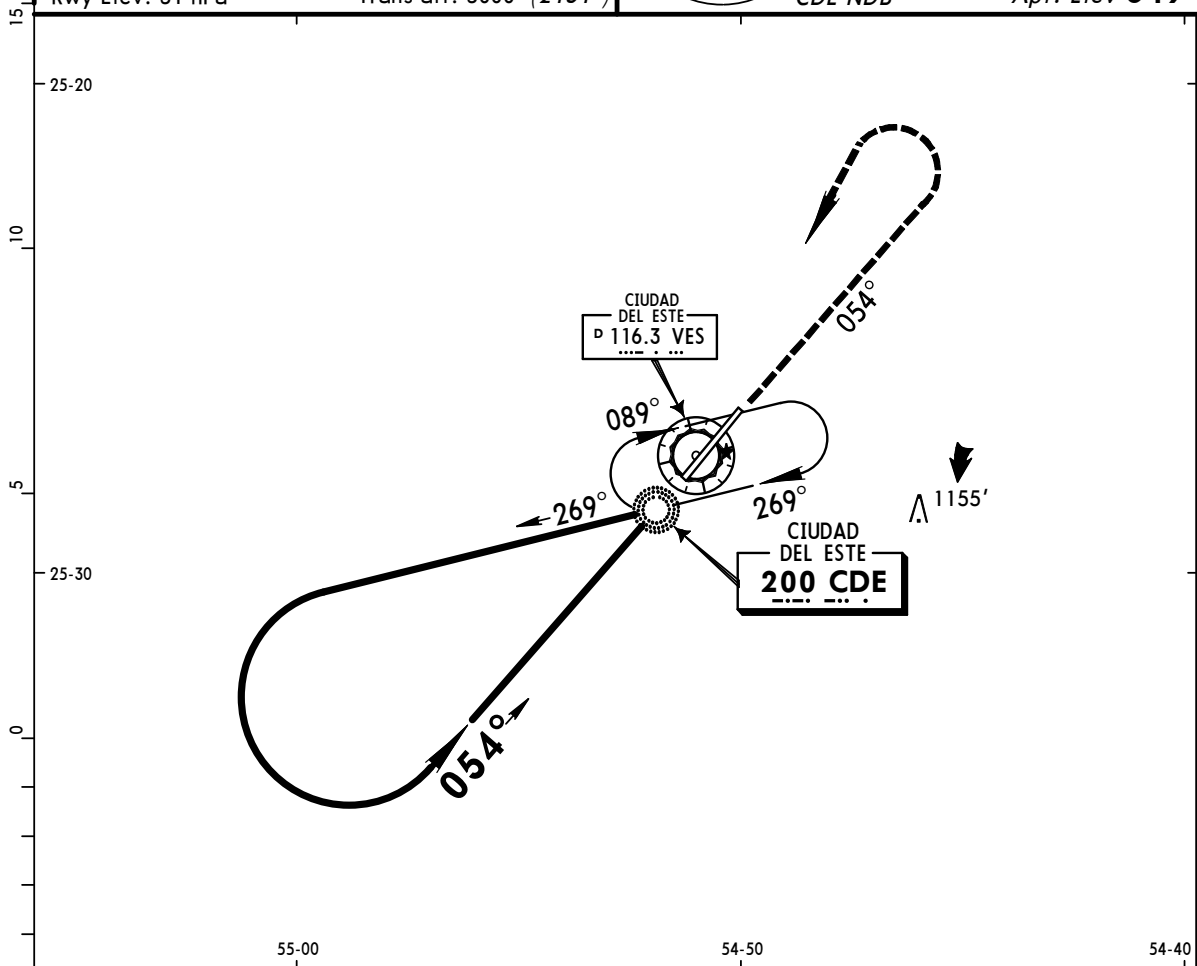
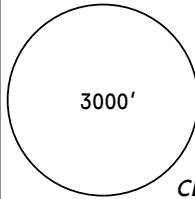
PROCEDURE CHARLIE

NDB Rwy 05

NDB 200 CDE

Apt. Elev 849'

GUARANI Approach **119.3 120.6**
 GUARANI Tower **118.1**
 Ground **121.7**
 Alt Set: hPa (IN on req) Trans level: By ATC
 Rwy Elev: 31 hPa Trans alt: 3000' (2151')



MISSED APPROACH: Climb on heading **054°** to **3000'** then turn **LEFT** and return to **CDE NDB** and hold.

STRAIGHT-IN LANDING RWY 05 **CEILING REQUIRED** CIRCLE-TO-LAND

MDA(H) 1340' (491')		Max Kts	MDA(H)	CEIL-VIS
A	CEILING-VISIBILITY	100	1370' (521')	600' - 2000m
B	500' - 2000m	135		
C	500' - 2400m	180	1550' (701')	700' - 3200m
D	500' - 3200m	205	1550' (701')	700' - 3600m

PANS OPS

Gnd speed-Kts	90	110	130	150	170	190
Rate of descent on final (feet/min)	550					
MAP at NDB						

CHANGES: New procedure.

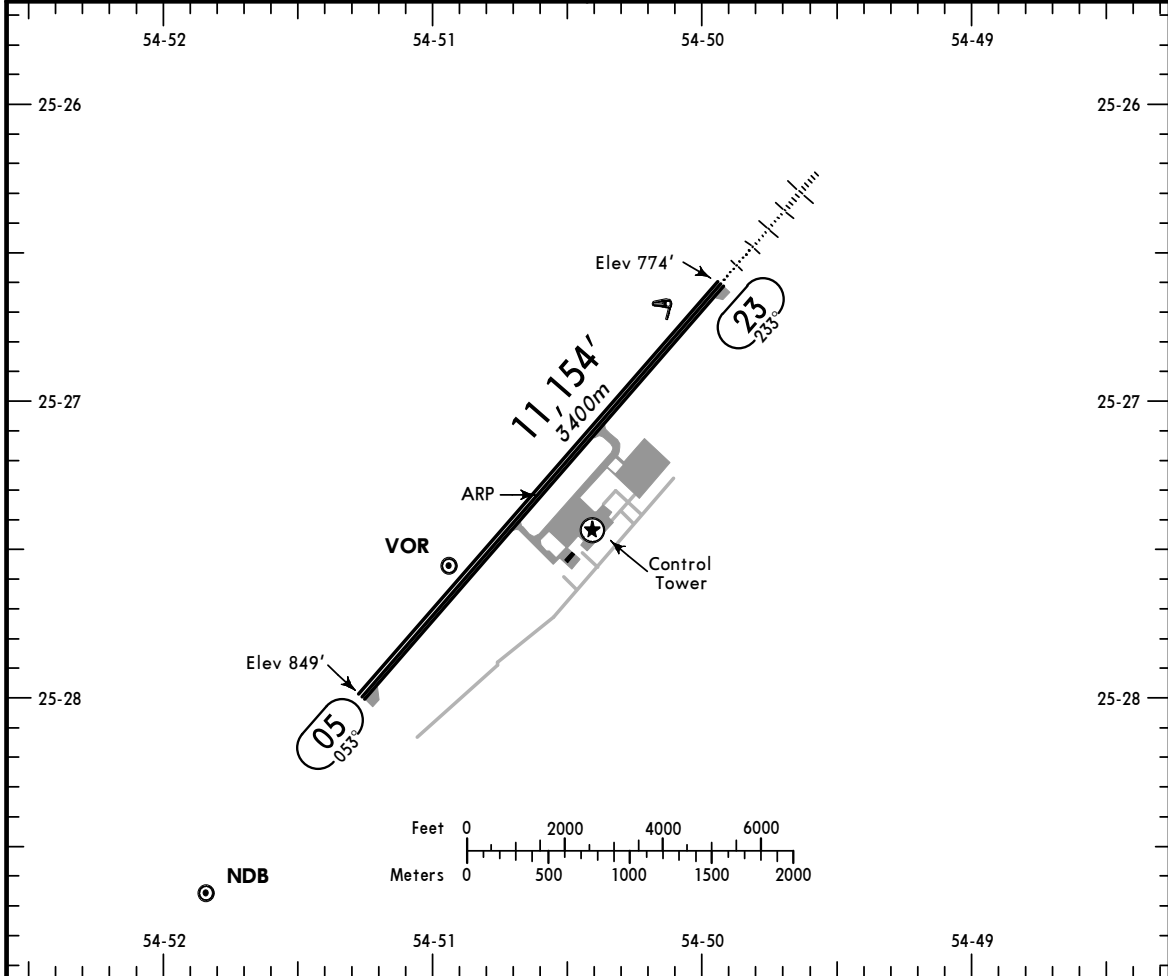
© JEPPESEN SANDERSON, INC., 1996. ALL RIGHTS RESERVED.

CIUDAD DEL ESTE, PARAGUAY
GUARANI INTL
 S25 27.3 W054 50.6 VES 116.3 - On Airport
 Elev **849'** Var 13°W

11-1 27 NOV 98



SGES
 GUARANI Ground **121.7**
 Tower **118.1**



ADDITIONAL RUNWAY INFORMATION

RWY		USABLE LENGTHS			WIDTH
		Threshold	Landing Beyond Glide Slope	TAKE-OFF	
05	RL PAPI				148'
23	RL ALS PAPI				45m

Available Landing Minimums