



SGME

JEPPESEN

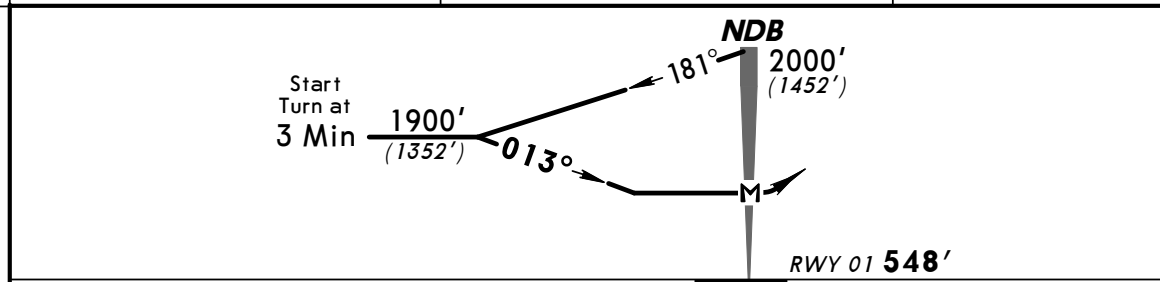
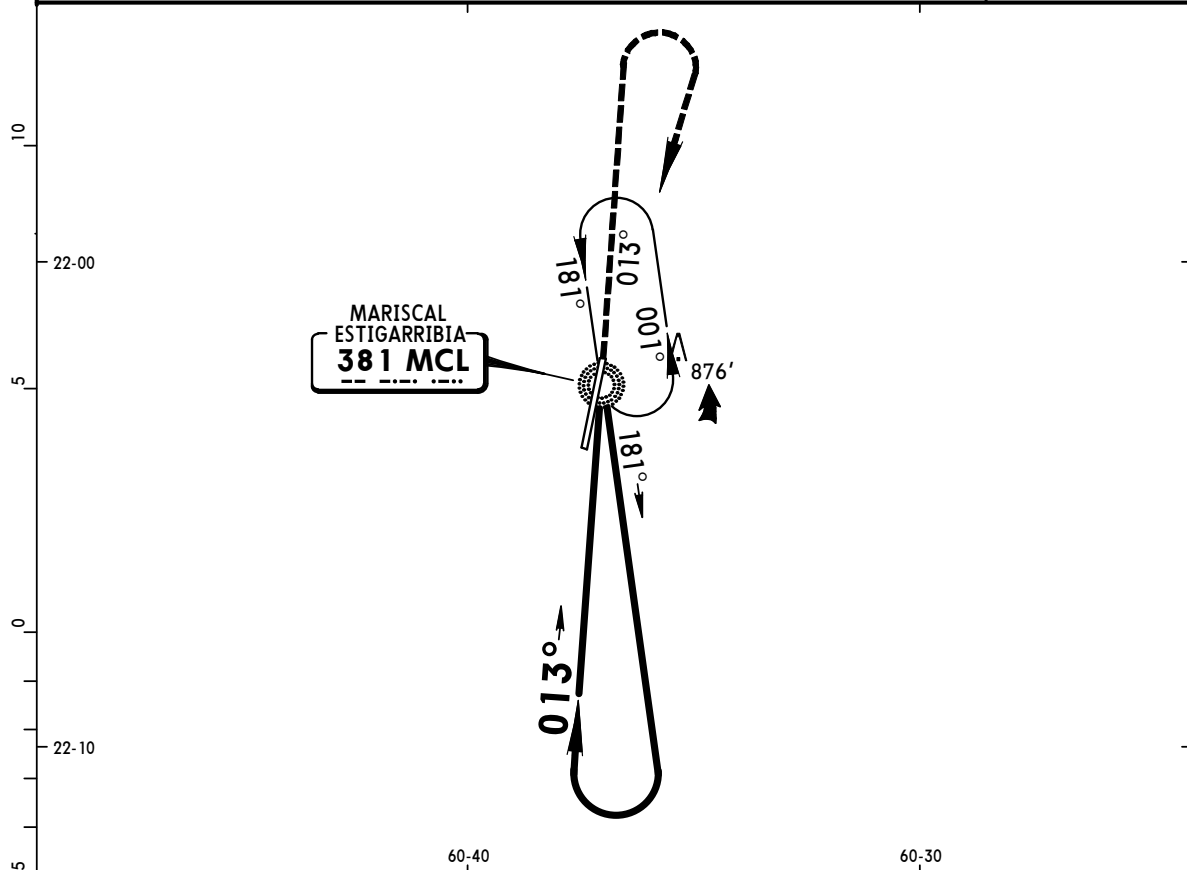
MARISCAL ESTIGARRIBIA, PARAGUAY  
PROCEDURE BRAVO

24 NOV 00 (16-2)

PROF DR PAC LUIS MARIA ARGANA

CAT A & B NDB Rwy 01

MARISCAL Radio 118.8					
NDB MCL <b>381</b>	Final Apch Crs <b>013°</b>	No FAF	MDA(H) <b>1170'</b> (622')	Apt Elev <b>548'</b> RWY 01 <b>548'</b>	
MISSED APCH: Climb on 013° bearing to 3000', then turn RIGHT to MCL NDB and hold.					
Alt Set: hPa		Rwy Elev: 20 hPa	Trans level: By ATC	Trans alt: 3000' (2452')	MSA MCL NDB



Gnd speed-Kts	90	110	130	140	160	180	REIL	3000'	on 013° Bearing
Rate of descent on final (feet/min)	550			NA					
MAP at NDB									

STRAIGHT-IN LANDING RWY01		<b>CEILING REQUIRED</b>	CIRCLE-TO-LAND		
MDA(H) <b>1170'</b> (622')		Max Kts	CEIL-VIS		
CEILING-VISIBILITY 700'-2400m			100	1170'(622') 700'-2400m	
A			135		
B			C	NA	
C			D	NA	
D					

PANS OPS

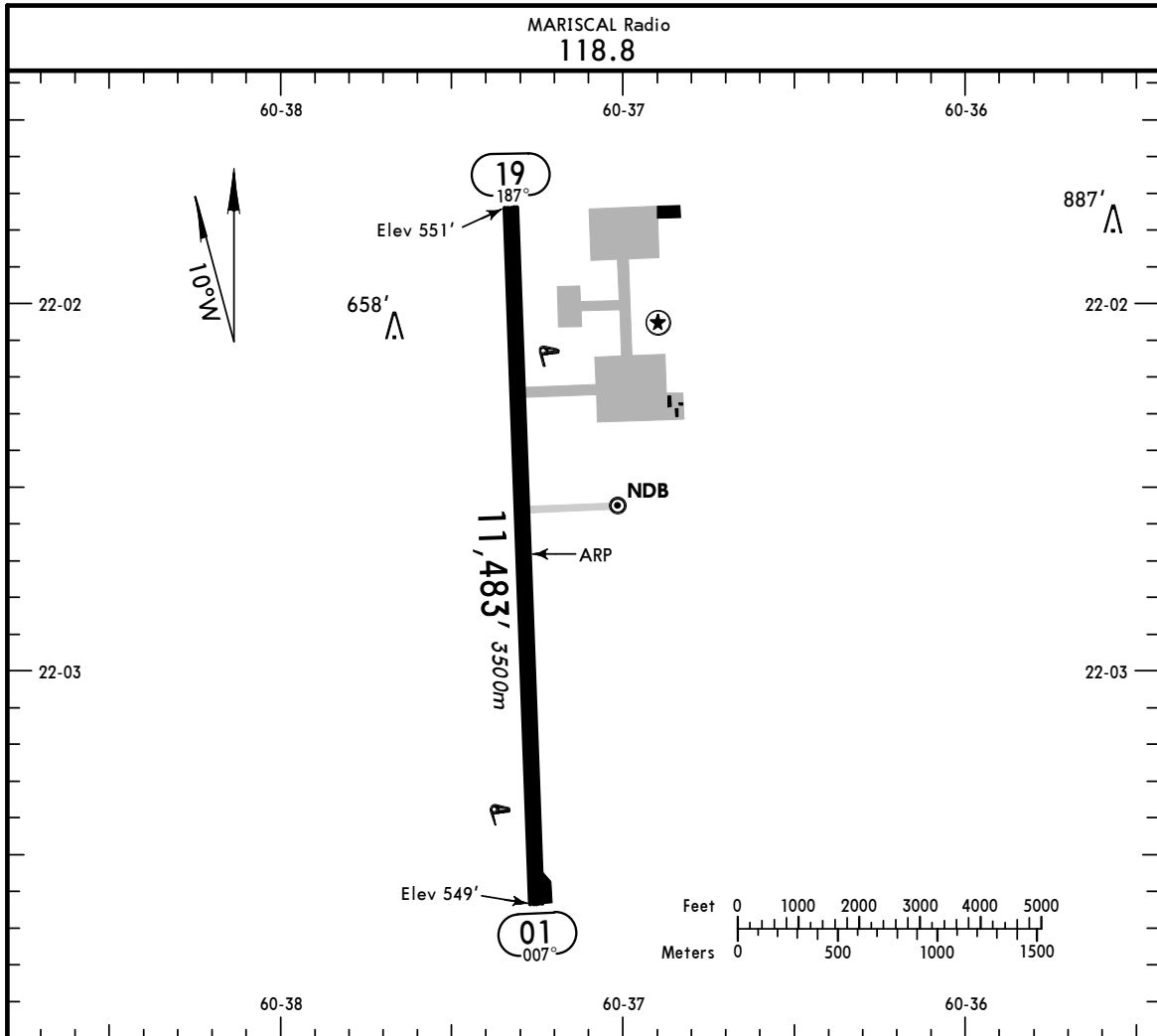
SGME

**JEPPesen** MARISCAL ESTIGARRIBIA, PARAGUAY  
 PROF DR PAC LUIS MARIA ARGANA

Apt Elev **553'**

4 JAN 02 (16-1)

S22 02.7 W060 37.3



ADDITIONAL RUNWAY INFORMATION

RWY	REIL	USABLE LENGTHS			WIDTH
		LANDING BEYOND Threshold	Glide Slope	TAKE-OFF	
01 19	RL REIL				131' 40m

TAKE-OFF

All Rwys

A  
B  
C  
D

Available Landing Minimums