

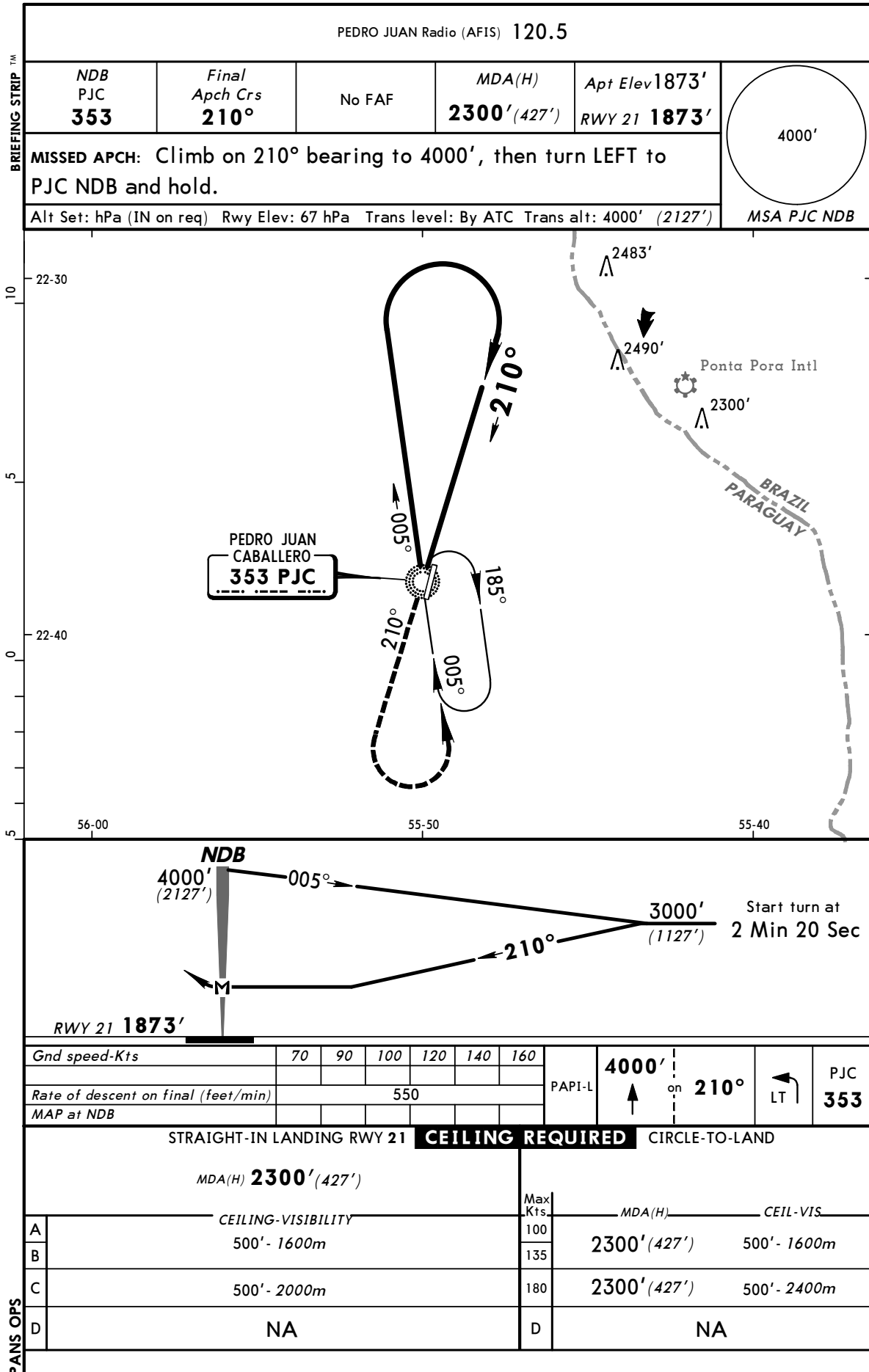
SGPJ

JEPPesen
 27 APR 01 (16-1)

PEDRO JUAN CABALLERO,
 PARAGUAY

PROF DR PAC AUGUSTO R FUSTER

PROCEDURE ALFA NDB Rwy 21

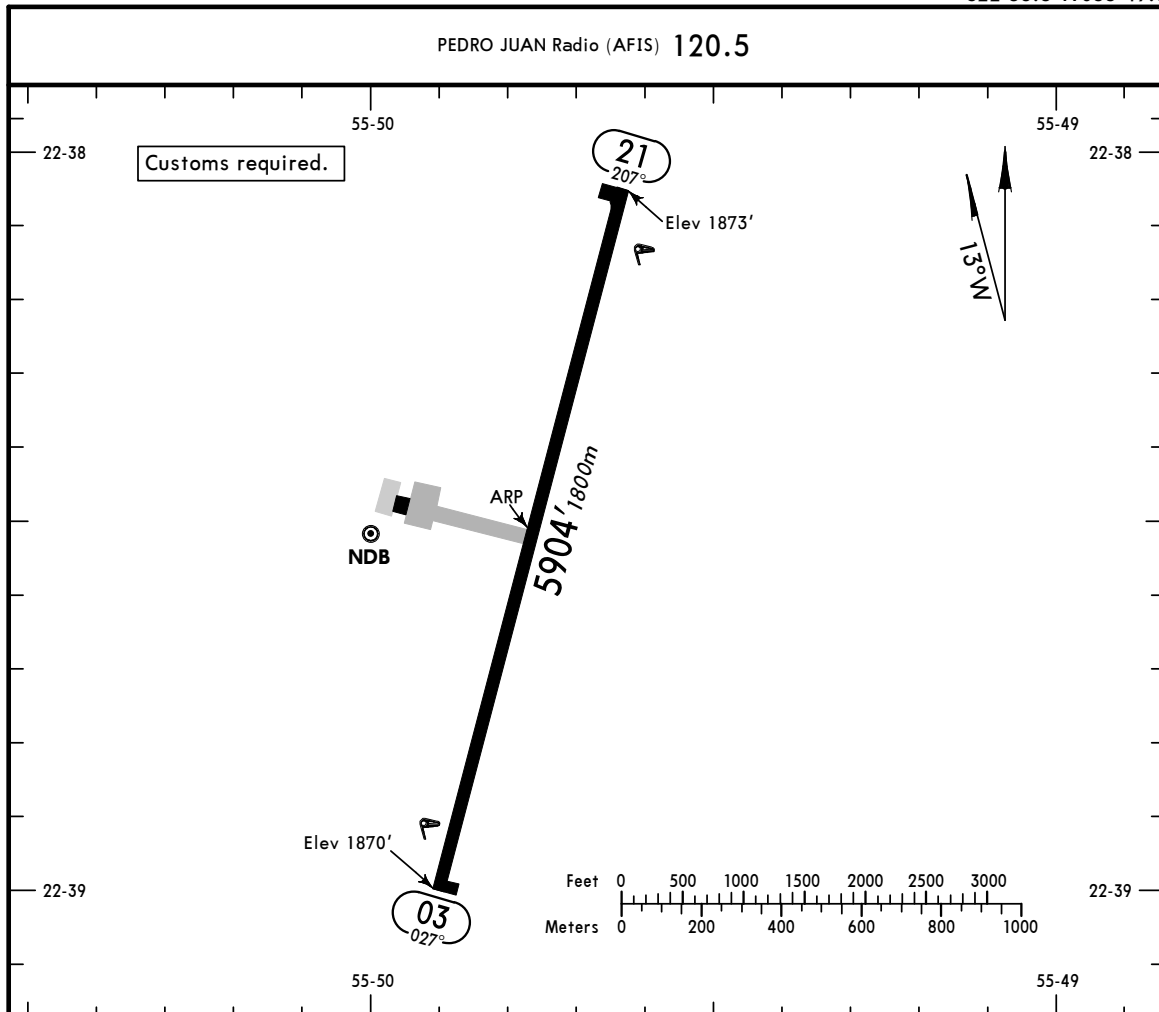


CHANGES: Missed approach altitude.

SGPJ

Apt Elev **1873'**

JEPESEN PEDRO JUAN CABALLERO,
 27 APR 01 (16-1)
PARAGUAY
 PROF DR PAC AUGUSTO R FUSTER
 S22 38.5 W055 49.8



ADDITIONAL RUNWAY INFORMATION

RWY		USABLE LENGTHS		TAKE-OFF	WIDTH
		Threshold	Landing Beyond Glide Slope		
03	RL				98'
21	RL PAPI-L				30m

JAR-OPS

TAKE-OFF

	AIR CARRIER		AIR CARRIER (FAR 121)	
	LVP must be in Force All Rwys RCLM (DAY only) or RL	All Rwys RCLM (DAY only) or RL	2 Eng	All Rwys Adequate Vis Ref
A				
B	250m	400m		RVR 500m
C			3 & 4 Eng	VIS 400m
D	300m			